

Painting portfolio 2014-16

A few examples of archive work by Delpha Hudson



No Shelter, (en abime) bitumen and acrylic on linen with antique frame, 37x47x6cm, 2016

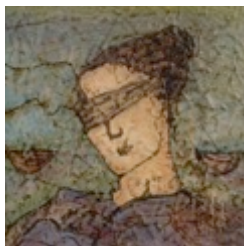


Pandora's Line, oil and bitumen paint on canvas, with milk paint layered frame, 60x40x4cm, 2016

SOLD

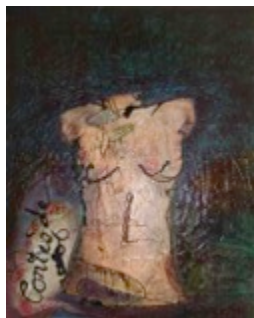


Come on play Mr Weschke, and bitumen paint on canvas, with milk paint layered frame, 50x40x3cm, 2015



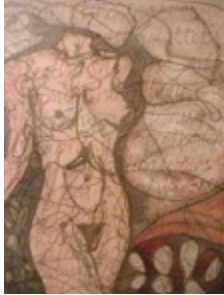



Just...? bitumen and oil paint on canvas, 40x40x4cm, 2016

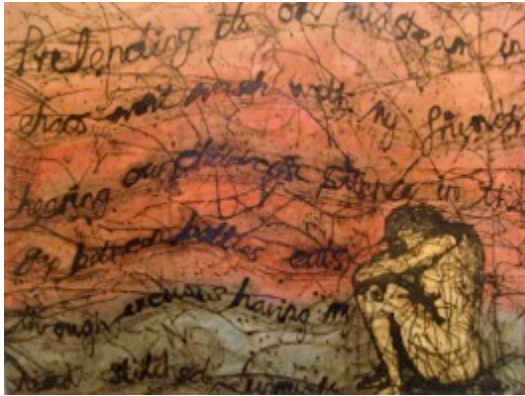
SOLD



Contes de Soi, 75x50x4cm, bitumen and oil paint on canvas, 2015

SOLD

	<p><i>I-Matter</i>, bitumen and oil paint on canvas, 75x50x4cm</p> <p>Part of the Em-bodied series. Other examples available.</p>
	<p><i>Mummy Dearest</i></p> <p>from RED-dress mummies series, bitumen and oil paint on canvas, 150x50x4cm, 2016 SOLD</p>
	<p><i>Parchment</i></p> <p>from RED-dress mummies series, bitumen and oil paint on canvas, 110x90x4cm, 2016</p>
	<p><i>Idealisation of the mother</i></p> <p>from RED-dress mummies series, bitumen and oil paint on canvas, 100x130x4cm, 2016</p>

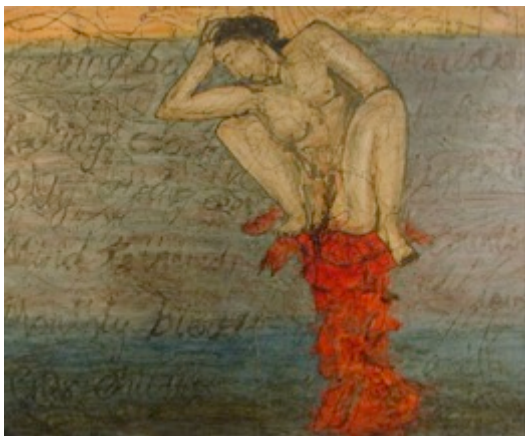


Midstream chaos

bitumen and oil paint on canvas,

150x120x2cm

SOLD



Ticking Clock

bitumen and oil paint on canvas,

150x120x2cm

SOLD



Wicked Mothers

bitumen and oil paint on canvas,

150x120x2cm

SOLD