


Painting Portfolio 2006-14  
*Liquid Selves* Delpha Hudson

Paintings were shown in shows and sold in various galleries around the UK including Marburae Gallery, *Off the Shelf*, Saltburn, the Art Lounge, Derby, *Double Lives*, Nottingham, *Tactile Bosch*, Cardiff, Redearth gallery, Devon, the Crypt Gallery, St Ives, *Drawing the line*, Hilton Young Gallery, Hesletine Gallery, with a solo show at Helston Museum Gallery, 2013.

This portfolio shows one or two that I have kept at my studio – the rest were sold. However if you would like to commission a monochrome work do get in touch.





|   |   |
|---|---|
|   | <p><b><i>SHE-HER-I,</i></b></p> <p>bitumen and gesso on canvas with frame, 45x35x4cm, 2014</p> <p><b>This one is still available.</b></p> |
|  | <p><b><i>I-THEM (I begin to hear voices)</i></b></p> <p>bitumen and gesso on canvas with frame, 35x 45x4cm, 2013</p>                      |

Exploring the politics of female identity, I drip bitumen onto canvas to create narratives for multiple selves. Psychoanalytic theories of self, non-self and other reveal problematic processes of 'becoming' for women. Using pattern and image I endeavour to construct 'iconographic utterance,...the dream as a fiction constructed by a unique aesthetic; the transformation of the subject into [her] thoughts, specifically the placing of the self into an allegory of desire and dread that is fashioned by the ego'.<sup>1</sup>

---

<sup>1</sup> Mieke Bal in Pollock, G. (ed), (2006), *Psychoanalysis and the Image*, Blackwell, London, p.32

I use aesthetic form to create language to explore gender roles express the non-narratable self. Bitumen is an earthy, textual substance. There is a 'magical happenstance' in its use, as control is limited. The contrast of using only black and white is a metaphor for subjectivity, split between thought, and transformation. Each painting uses multiple pronouns to infer multiplicity and the pattern-like 'texts' to draw attention to women's past, and future selves.

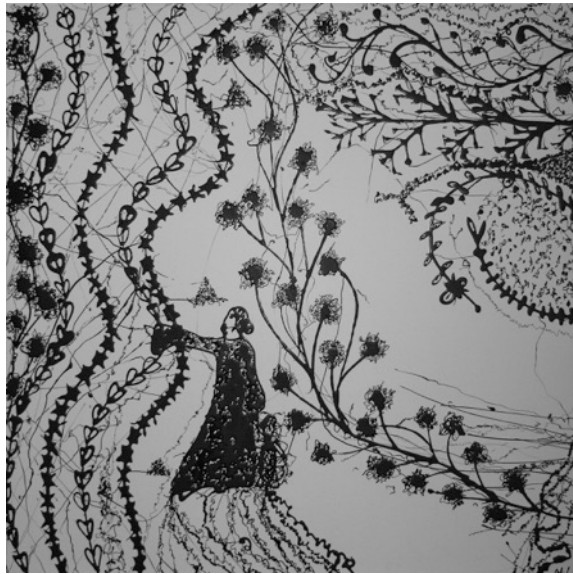
|   |  |
|---|--|
|    | <p><b><i>IT-YOU</i></b></p> <p>2010<br/>Bitumen and gesso on canvas</p> <p>30x30x4cm</p>   |
|   | <p><b><i>THUS-I</i></b></p> <p>Bitumen and gesso on canvas with frame, 40x40x4cm, 2010</p>   |
|  | <p><b><i>WE (strongly disagree)</i></b></p> <p>bitumen and gesso on canvas, 40x30x4cm, 2015</p> <p><b>This one is still available.</b></p> |
|  | <p><b><i>WE-I</i></b></p> <p>bitumen and gesso on canvas, 40x40x4cm, 2010</p>  |

|   |  |
|---|--|
|    | <p><b><i>ME-THEM-THEN</i></b></p> <p>bitumen and gesso on canvas,<br/>40x40x4cm, 2015</p>  |
|    | <p><b><i>IT-I (as in a fairytale)</i></b></p> <p>bitumen and gesso on canvas,<br/>50x50x4cm, 2010</p>  |
|  | <p><b><i>SHE (thought if shesquinted hard enough, everything would change)</i></b></p> <p>bitumen and gesso on canvas with<br/>frame, 53x64x4cm, 2012</p> <p><b>This one is still available.</b></p> |
|  | <p><b><i>HER-IT</i></b></p> <p>bitumen and gesso on canvas with<br/>frame,</p> <p>60x50x4cm, 2009</p>  |



***HER-THEM***

bitumen and gesso on canvas,  
50x60x4cm, 2012



***HER-IT (as in a dream near the  
mount)***

bitumen and gesso on canvas,  
90X90cmx4cm, 2010

**This one is still available.**