

Ironic Iconographies s a series of works using bitumen paint on canvas by Delpha Hudson

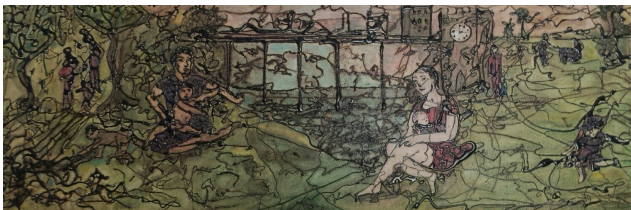
Please enquire about details, prices and delivery via the contact page or email delphahudson@gmail.com



Architecture of the self

bitumen paint and oil
on canvas with black
fram,

93x33x5cm



White Rhino, Black Rhino

bitumen paint and oil
on canvas with black
fram,

93x33x5cm



Pandora's Line

oil and mixed media on
canvas

with frame by Nigel
Bispham

60x40x4cm



***Let's put differences
aside***

Bitumen and acrylic on
Italian Linen with gold
leaf and gold frame

40x54x4cm



***'Down, Deeper Down',
she said***

bitumen and oil paint
on canvas
framed by Nigel
Bispham

50x40x3cm



***Come on play Mr
Weschke***

bitumen and oil paint
on canvas
framed by Nigel
Bispham

50x40x3cm



No shelter (en abime)

Oil and bitumen paint
on Italian linen with
antique frame

37x47x4cm



Pas du dejeuner (no dinner)

Oil and bitumen paint
on Italian linen with
antique frame

57x46x5cm



***Les habitants du foret
du lui-memes
(inhabiting the forest of
the self)***

Oil and bitumen paint
on Italian linen with
gold frame

42x59x4cm



The back of dreams,

bitumen and oil paint
on canvas, with gold
frame

113x93cmx4cm